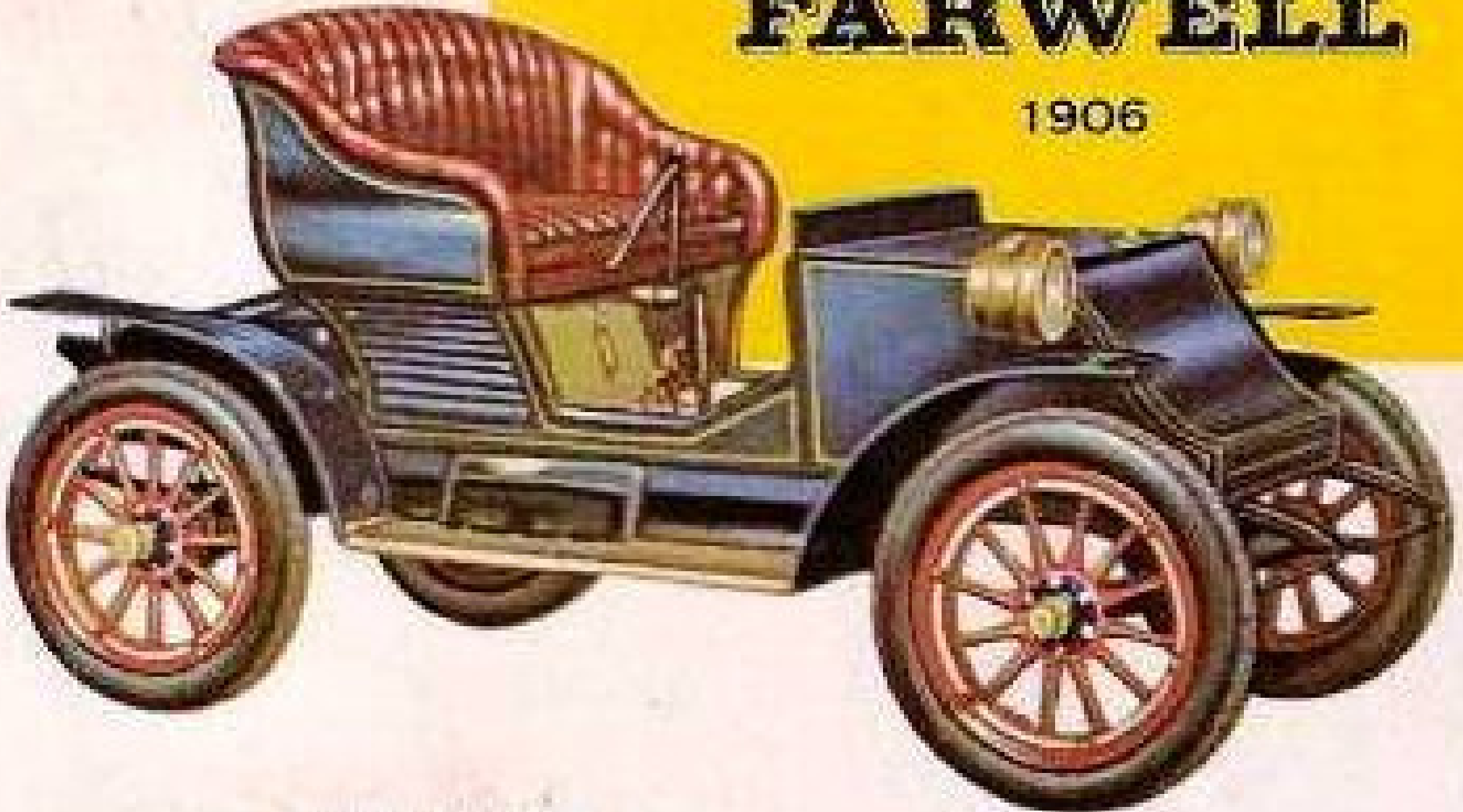


ADAMS- FARWELL

1906



ADAMS-FARWELL

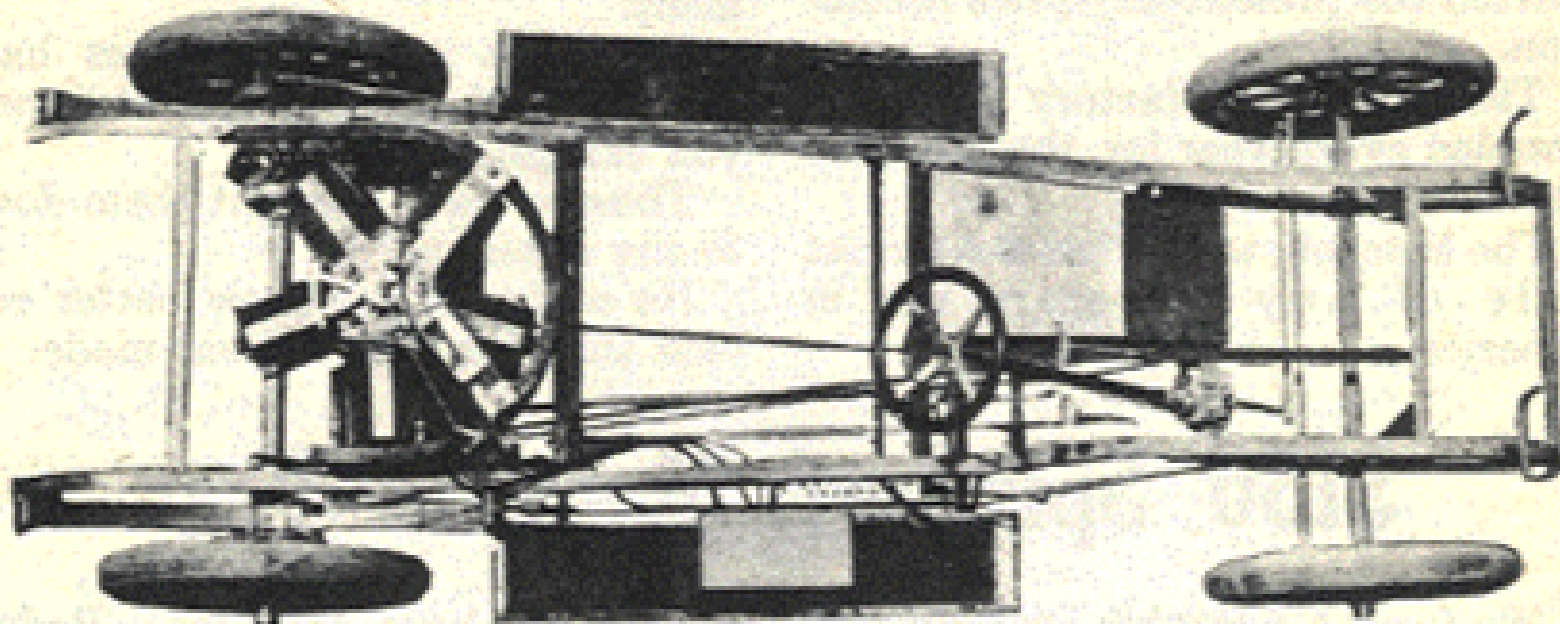
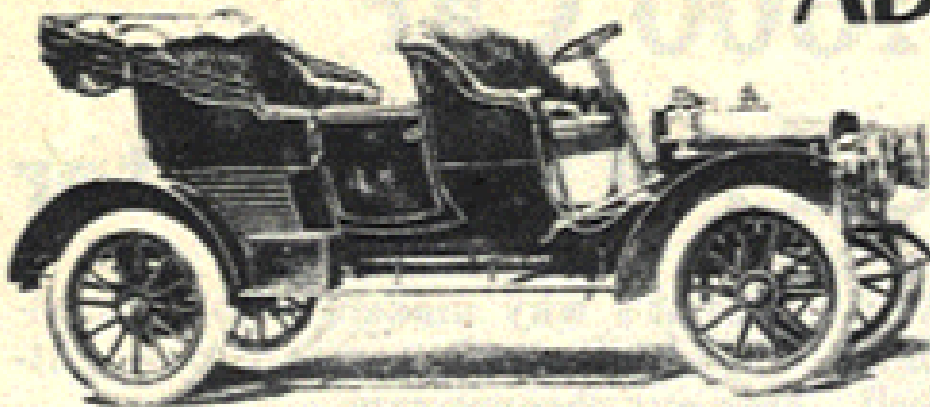
Revolving Air-Cooled Motor

40-45 H. P. Five Cylinders, 5x5 Inches

Four Speed Selective Transmission with two clutches, requiring no skill to operate. It is impossible to engage both clutches at the same time.

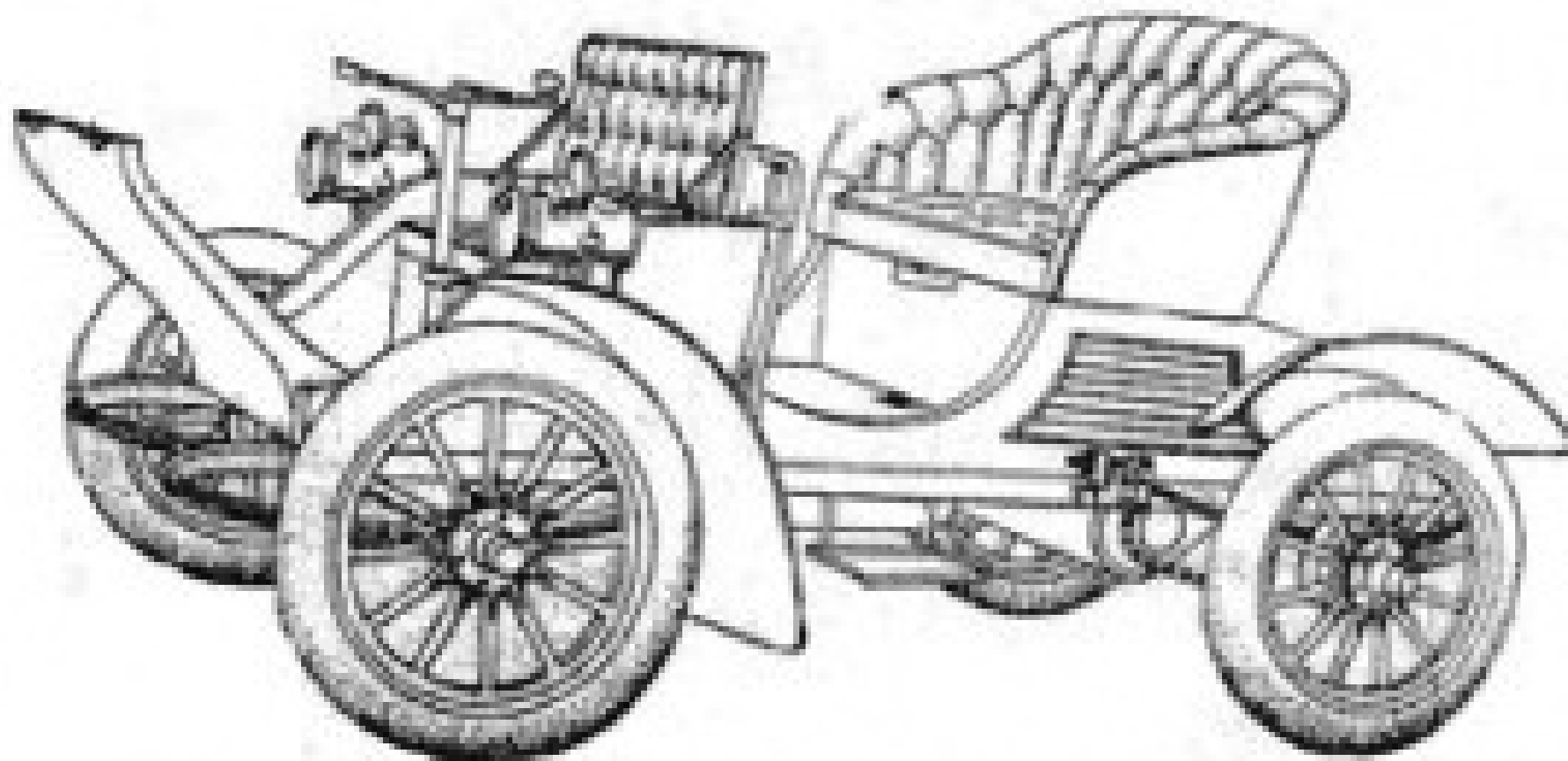
Ask for "61 Vantage Points."

The ADAMS COMPANY
East Fourth St., Dubuque, Iowa



CHASSIS OF ADAMS REVOLVING-CYLINDER MOTOR-CAR

The Adams Company, Dubuque, Iowa.



ADAMS - FARWELL MOTOR CAR.

Can be operated from either seat. Has three cylinder, revolving, air cooled Motor 20 Horse Power. Luxuriously trimmed and finished.

No Water.

No Radiator.

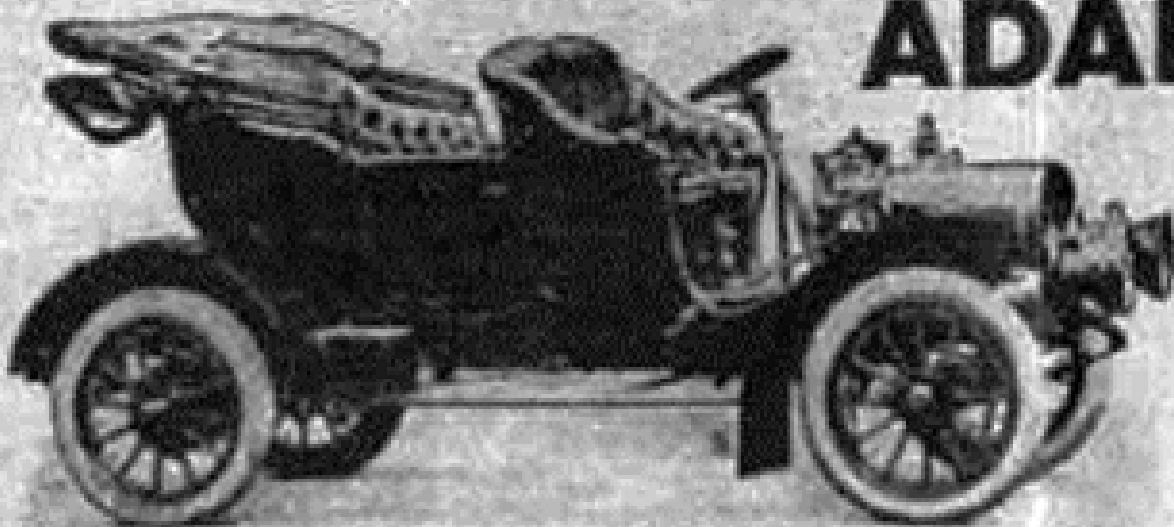
No Fly Wheel.

No Muffler.

Made with several style bodies. **SEND FOR CATALOGUE** Four Speed Transmission.

THE ADAMS COMPANY.

DUBUQUE, IOWA



ADAMS-FARWELL

Revolving Air-Cooled Motor

40-45 H.P. Five Cylinders, 5 1/2 inches. \$2,900.

Tonnes seat is as comfortable as front seat. No vibration communicated from motor to passengers. Simple to operate and maintain, owing to small number of parts. Luggage carrying capacity, 17 cubic feet.

THE ADAMS COMPANY,

Foot of Third St., Dubuque, Iowa.

The Automobile: 12/30/06